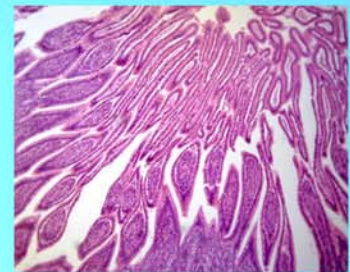




LABOMED, INC.

www.labomed.com
spectro@labomed.com



LB-210 Biological Binocular Educational Microscope with LED Illumination and Finite Optical System (Anti-Fungus)

Sliding Binocular Head, Inclined at 45°, 360° Rotatable

Built-in Revolving Quadruple Nosepiece.

Built-in Rotating Head

Optical Coating

Brass Gears

Wide Field Eyepiece WF10×/18, 4 Hole Nosepiece

Achromatic Objectives 4×, 10×, 40×(S), 100×

Double Layers Mechanical Stage 110x120mm/70X20mm Coaxial Coarse and Fine Adjustment

Abbe NA 1.25 with Iris Diaphragm & Blue Filter, Rack and Pinion Adjustment for Condenser

LED Illumination, Brightness Adjustable for Long Life and Energy Saving

Dust Cover

Styrofoam & Carton, Dimension 28x20x40cm, 3kg



LABOMED, INC.

www.labomed.com
spectro@labomed.com

LB-210 Biological Binocular Educational Microscope with LED Illumination and Finite Optical System (Anti-Fungus)

Applications

LB-210 Biological Binocular Educational Microscopes with LED Illumination, Wide Field and Finite Optical System (Anti-Fungus) offer ease of use, reliability and a modern design. These microscopes are economically priced, with all basic features for educational use in high schools and colleges.



Specifications

Binocular Head:	Sliding Binocular Head, Inclined at 45°, 360° Rotatable
Nosepiece:	Quadruple Nosepiece
Eyeiece:	Wide Field Eyepiece WF10×/18
Achromatic Objective:	4×, 10×, 40×(S), 100×
Stage :	Double Layers Mechanical Stage 110×120mm/ 70×20mm
Focusing:	Coaxial Coarse and Fine Adjustment
Condenser:	Abbe NA 1.25 with Iris Diaphragm & Blue Filter, Rack and Pinion Adjustment for Condenser
Illumination:	LED Illumination, Brightness Adjustable
Spare Parts:	Dust Cover
Package:	Styrofoam & Carton
Dimension & G.W:	28cm × 20cm × 40 cm, 3kg

Dimensions

